

# THE BIG WINCH

NOW

# COOBER PEDY'S

# LARGEST OPAL DISPLAY



The Big Winch, the highest point in Coober Pedy, in the centre of town, is now Coober Pedy's largest opal display showroom.

The newly extended Big Winch is the most solid structure in town "Built like a bunker" says Claus Wirries. "This new building has 178 tons of steel in it!"

Claus and Gabbie Wirries have lived in Coober Pedy since 1971. Claus is a qualified opal cutter and valuer, and a foundation member of the Australian Gem Industry Association.

This new building designed by Claus, has that old fashioned bush atmosphere and is the perfect setting to enhance Helen Jensen's 'Expressions in Oil'. "It's more like a gallery than an opal shop", commented one tourist.

Revisit the Big Winch, I think you'll be pleasantly surprised - but watch out for those guard-dogs!



NEW  
LOOK

Hosts: Gabriel and Claus Wirries

# THE ^ BIG WINCH

SEEING IS BELIEVING

EVERYONE IS INVITED

Locals, visitors and friends, see for yourself,  
step through the doors into another world  
- one of beauty, colour and excitement -  
one of art and opal.

The spectacular colonial design and warm, friendly atmosphere is enhanced by the beauty of natural stone and timber.

Add to this the outstanding creations of Helen Jensen's expressions in oil - charming evoking outback beauty - never before seen on such a scale - and you have entered

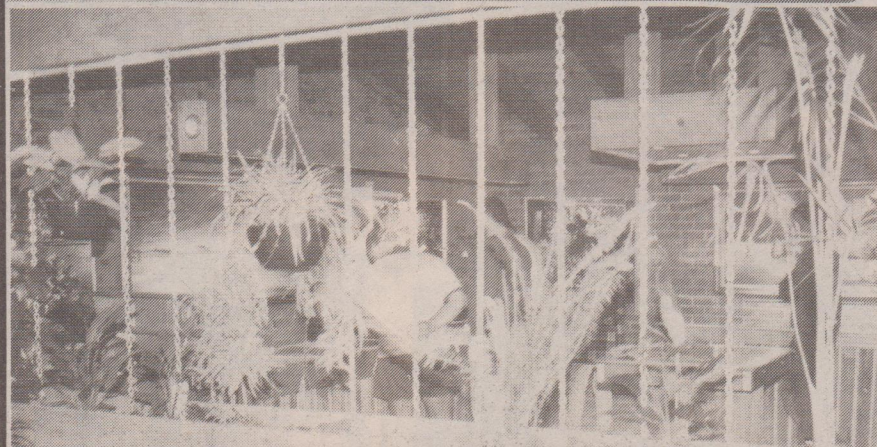
## THE HOUSE OF OPAL FUTURES



# A TOTAL OPAL EXPERIENCE

Photograph  
the breathtaking  
view.

Expecting  
T.V. Star  
"Matilda"  
on guard duty



Siggy at his best!

- Largest range of centralian opal and settings
- Award winning jewellery designs - many from Europe
- Largest collection of fossil specimens in the world
  - valued at over \$500,000
- Largest range of black opal and black opal jewellery
  - 14 carat and 18 carat gold range
  - Largest range of solid opals
  - Expert opal cutting and carving
  - Qualified opal valuer
- Largest seashell fossilised opal specimen
- Expert and experienced assistants
  - to help you know
  - and understand
  - that beautiful
  - and intriguing stone
  - the OPAL

Generous  
discounts  
for locals and  
their friends

# HELEN JENSEN

- A MUST TO SEE -  
AT THE BIG WINCH GALLERY



THE BEGINNING OF FIRE

Helen Jensen's outstanding expressions are interpreted with compelling directness and simple, colourful beauty - one of South Australia's great artists.

