

*Presents*

School begins at Coober Pedy

**1960**

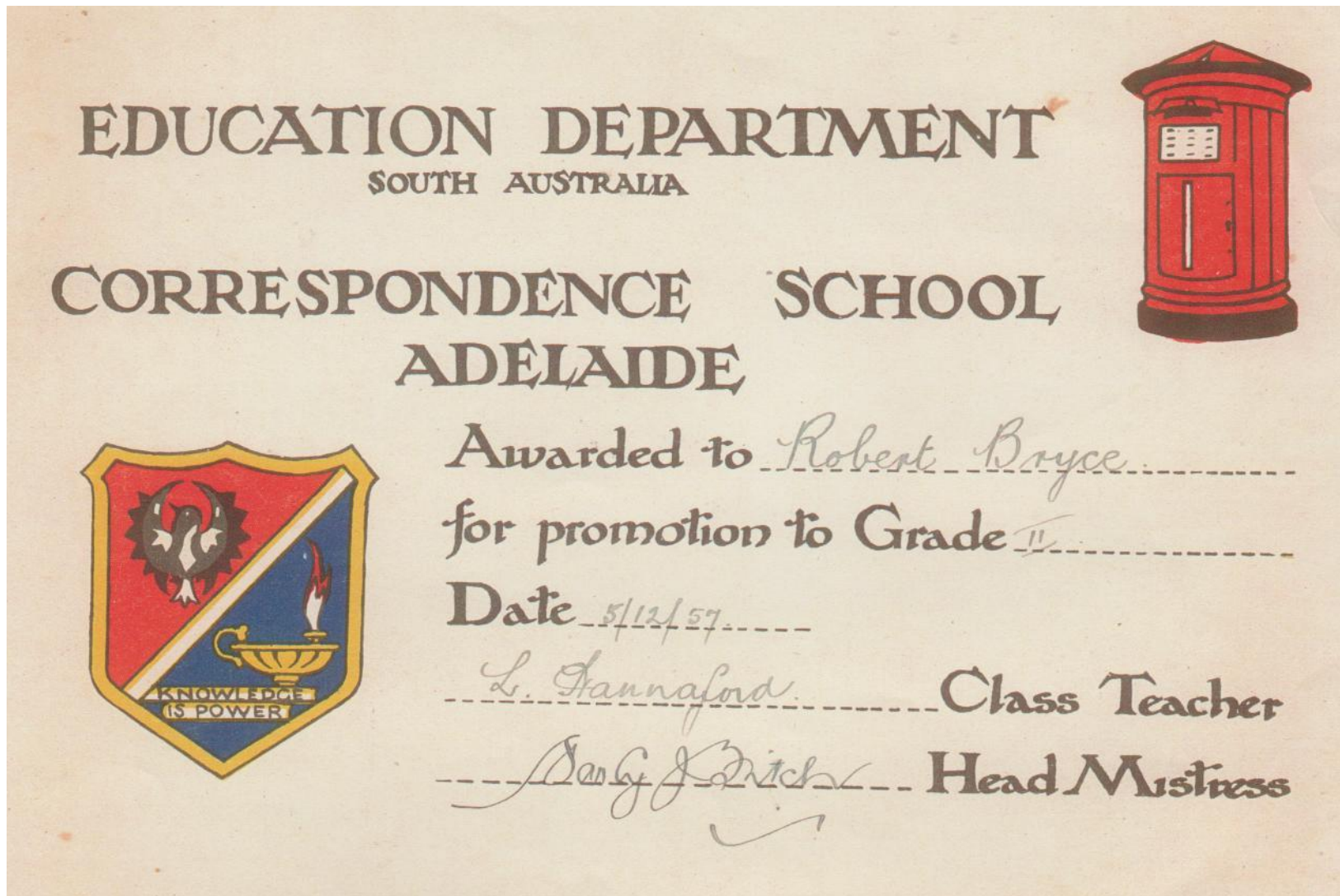
George and Horace Thompson doing their schooling by correspondence  
c. 1935



1953 - Blatchford children at work on their lessons with their mother



# 1957 – Robert Bryce's award promoting him to Grade II



1959 – The Progress Association constructed the Community Hall by voluntary labour, used for meetings and picture shows, then school in 1960



The Mission on the Aboriginal Reserve where Pastor and Mrs Traeger lived in 1959 and also initially housed the teachers in 1960



The Community Hall 1960 with toilet behind.  
Its position today would be on the west side of the roundabout



First day of School in the Community Hall 10-2-1960, teachers  
Anatoly Waniarcha & Geoff Byrnes on left





# Children on the first day of school



Aerial photo of Coober Pedy 1960. Community Hall is the lower building. Geoff Byrnes said the playground went on forever



# Teachers Anatoly Waniarcha & Geoff Byrnes with school children 1960



1961 – school in Community Hall with teachers Sid Allen (left) & Geoff Byrnes (right)



Teacher Geoff Byrnes playing cricket with boys  
outside the Community Hall 1961 with a box for the wicket



1961 Geoff Byrnes outside the teachers' dugout, which was on the site below the Big Winch





Sid Allen having a “bucket shower” 1961  
NW Ridge is on the skyline

Geoff Byrnes washing up in the Teachers' dugout 1961





The transportable school building of 3 classrooms  
arrived in Coober Pedy in September 1961



Community Hall with first school building behind, on left c.1962



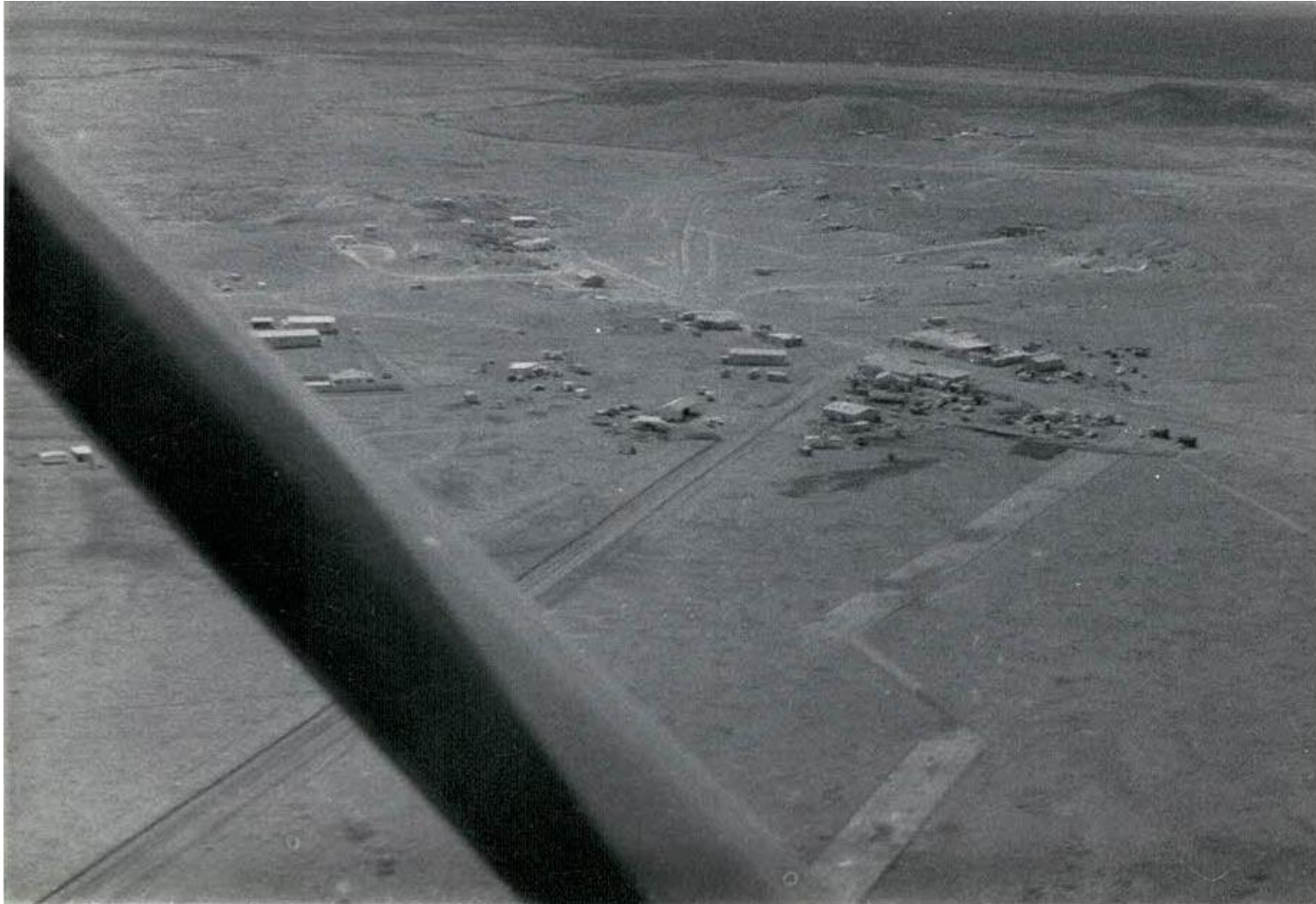
The first school building and a shelter shed on the far right.  
The Miner's Store and BP on the hard left  
where the Drive through bottle shop is today



Aerial photo 1964. A second school building of 2 rooms added (seen in the upper centre of photo)



Another aerial view of town c.1964, showing the school and head teachers residence (just right of the aeroplane strut)



Teachers Graham Jenkins, Mrs Jenkins and Mrs Gianni with students watching the planting of the first tree in the school yard 1964



1965 – children playing in the school yard. A third school building (with red roof) added



An assembly in 1967. The area between the school buildings was paved with cement slabs by that time.

